



2025 TOURING

# GTXTM 230

Comfort, control and power are always in style.

## KEY FEATURES

- Rotax® 1630 ACE™ - 230
- ST3™ Hull
- iDF - Intelligent Debris-Free Pump System
- BRP Audio - premium system (optional)
- iBR® - Intelligent Brake & Reverse\*
- Variable Trim System (VTS™)
- LinQ™ attachment system
- Boarding ladder
- Direct-access front storage
- Watertight phone compartment
- Tech Package (optional): BRP Audio - premium system & Full color 7.8" wide display, USB port



Blue Abyss / Gulfstream Blue

iDF/iTC/iBR/ST3/CLCS/ECO

## CAPACITY

Rider capacity	3
Weight capacity	272 kg
Fuel capacity	70 L
Glove box	2.9 L
Front bin	96 L
Storage capacity - Total	98.9 L

## DIMENSIONS

Length (bumper to bumper)	345.1 cm
Width	125 cm
Height	114 cm

## HULL

Type	ST3™ Hull
Material	Fiberglass

## OTHER FEATURES

Ergolock™ two-piece seat with stepped design	Handle Grips with palm rest
Seat strap	Footwell carpets
iBR® - Intelligent Brake & Reverse	Large swim platform
RF D.E.S.S.™ key	Tilt steering
Wide-angle mirrors	Ski tow eye

## ROTAX ENGINE

	1630 ACE™ - 230
Intake system	Supercharged with external intercooler
Displacement	1,630 cc
Cooling	Closed-Loop Cooling System (CLCS)
Reverse system	Electronic iBR®*
Starter	Electric
Fuel type	95 octane
Throttle system	iTC™ (Intelligent Throttle Control)
Exhaust System	D-Sea-Bel™ system

## GAUGE

Type of gauge	Large panoramic 7.8" wide LCD display (with Tech Package) 7.6" wide digital display	
Main functions	BRP Connect (opt.) Music (opt.) Navigation (opt.) Bluetooth† connectivity (opt.) Speedometer	RPM Clock VTS™ Fuel consumption (opt.) Fuel autonomy Vehicle hours
iTC System - mode	Sport mode ECO® mode	Slow mode Speed regulator

## WEIGHT

Dry weight (oil, coolant, no fuel)	367 kg 376 kg (with Tech Package)
Power to weight ratio (HP / lbs)	0.284302

## WARRANTY

BRP limited warranty covers the watercraft for two years.

\*Electronic brake, neutral and reverse.

1 Bin organizers are not included.

†GTX is a trademark of Castrol Limited used under license.

†Bluetooth† is a registered trademark owned by Bluetooth† SIG, Inc. and any use of such trademarks by BRP is under license.



**FEATURE HIGHLIGHTS**



**iDF - Intelligent Debris Free system**

An innovative, industry-first system that allows you to free your pump of weeds and debris with intuitive handlebar-activated controls.



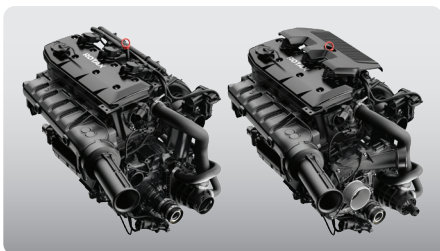
**Tech Package (optional)**

Levels up entertainment and functionality on the water. It includes a factory-installed, truly waterproof Bluetooth® audio system, a 7.8" color display and a usb port.



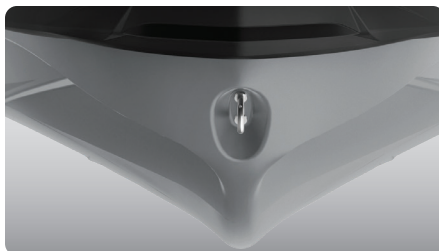
**Swim platform with integrated LinQ™ system**

Exclusive quick-attach system on the largest swim platform in the industry that allows for easy installation of accessories.



**ROTAX® 1630 ACE™ - 230**

The Rotax® 1630 ACE™ engine block is offered in two configurations on this versatile platform. The 125kW (170hp) boasts naturally aspirated punch with optimal fuel economy. The 169.16 kW (230 hp) supercharged version allows you to level up the performance to your liking.



**ST3™ Hull**

An innovative hull that sets the benchmark for rough water handling, stability, and offshore performance.<sup>4</sup>



**Direct-Access Front Storage**

All your gear within arm's reach thanks to a 96 L front storage area, easily accessible from a seated position. Simply raise the handlebars to access essentials for any adventure.

©2024 Bombardier Recreational Products Inc., (BRP). All rights reserved. ®, TM and the BRP logo are trademarks of Bombardier Recreational Products Inc. or its affiliates. All product comparisons, industry and market claims refer to new sit-down PWC with 4-stroke engines. Watercraft performance may vary depending on, among other things, general conditions, ambient temperature, altitude, riding ability and rider/passenger weight. Testing of competitive models done under identical conditions. Because of our ongoing commitment to product quality and innovation, BRP reserves the right at any time to discontinue or change specifications, price, design, features, models, or equipment without incurring any obligation. †Garmin is a trademark of Garmin Ltd. or its subsidiaries.